

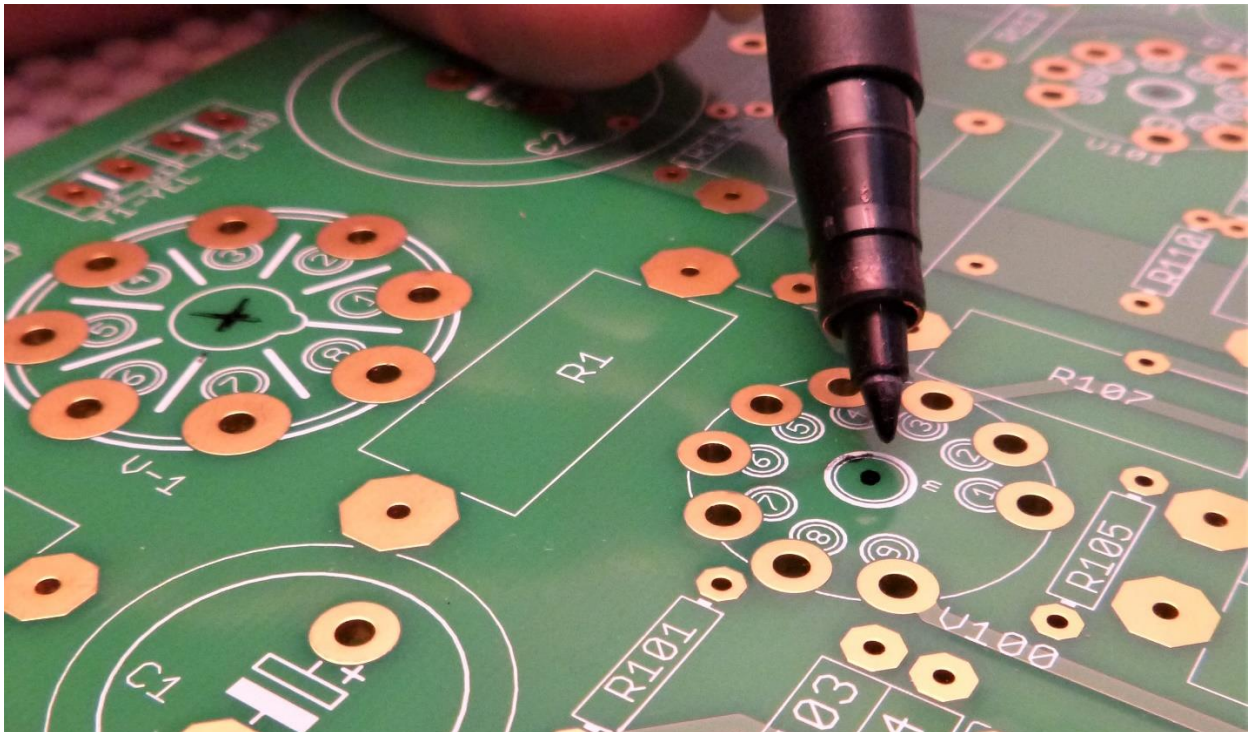
Part 2, Attachment 1. Circuit Board Prep.

Wall of Sound.ca Tubelab DIY EL84 Amp

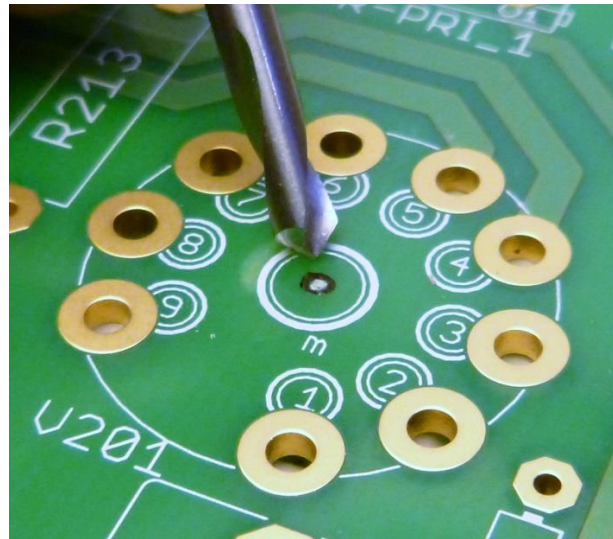
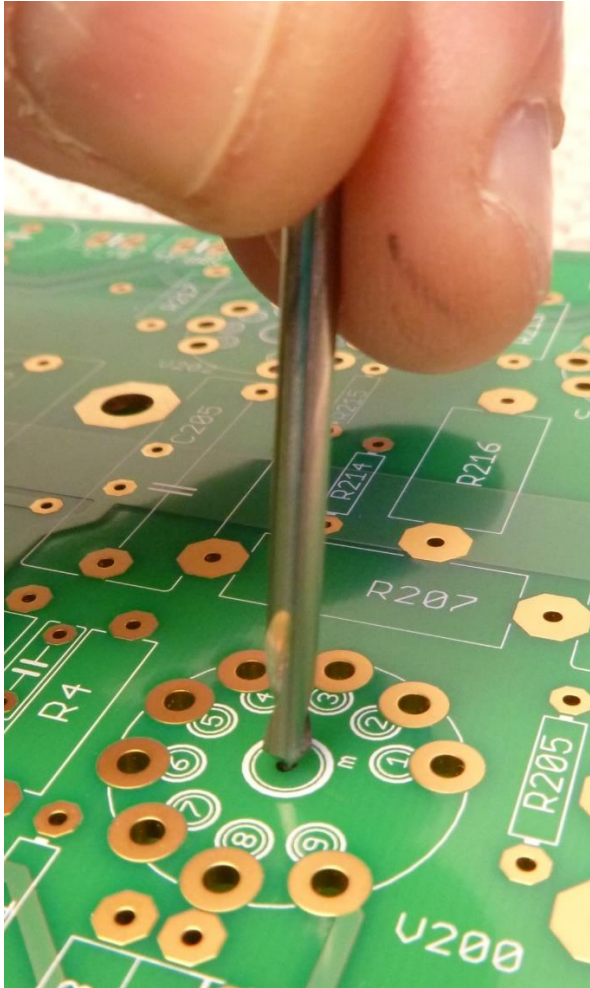
Tools Required:

- Fine tip marker
- Centre drill
- 1.7mm or 1/16" drill bit
- 2-speed, variable speed electric drill
- Small (1/8" or 3/16") countersink

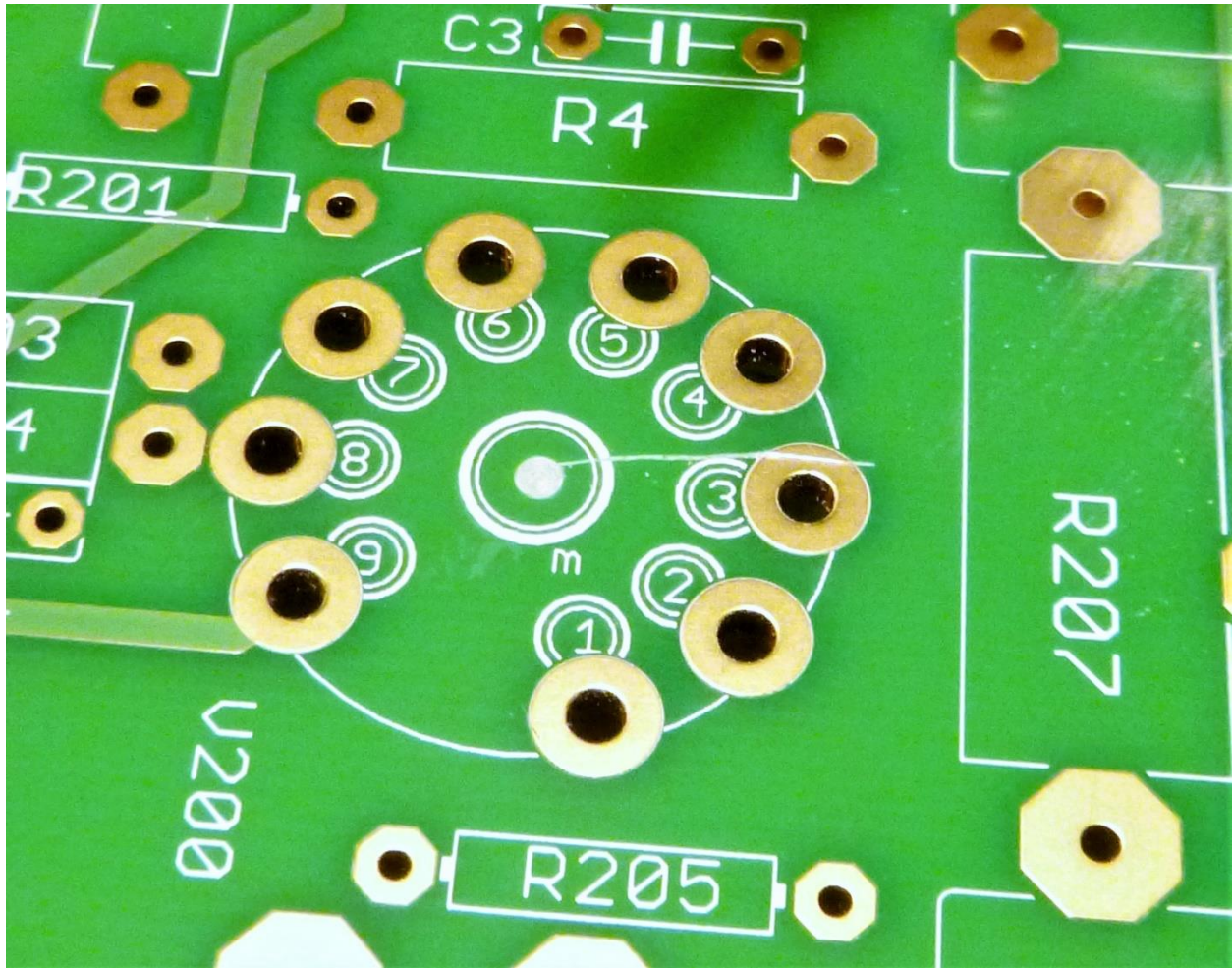
To aid layout of the chassis top plate, tube location holes are drilled in the circuit board.



Mark the centre of each of the **seven** tube socket locations with a fine tip marker.

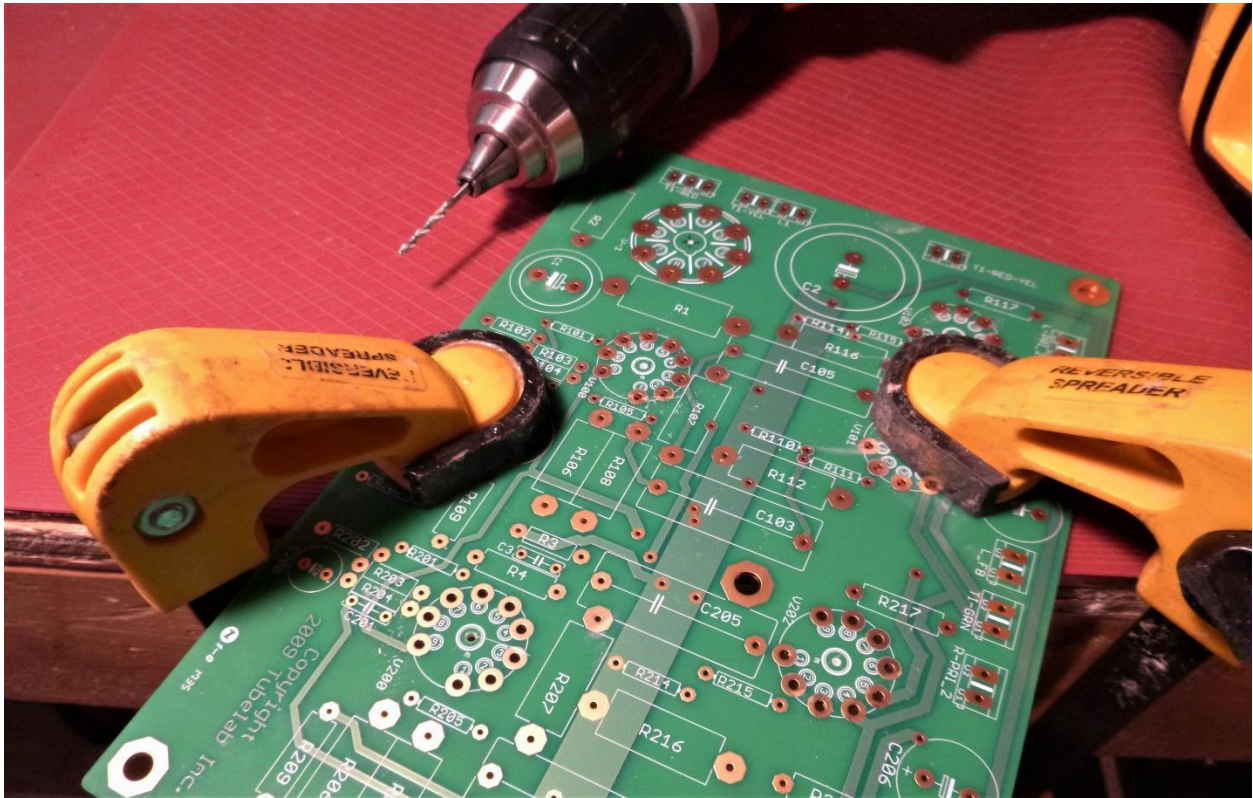


Twisting the centre drill in your fingers, lightly mark the board in the **seven** tube socket locations. This will make it easier to find the correct position when using the power drill.

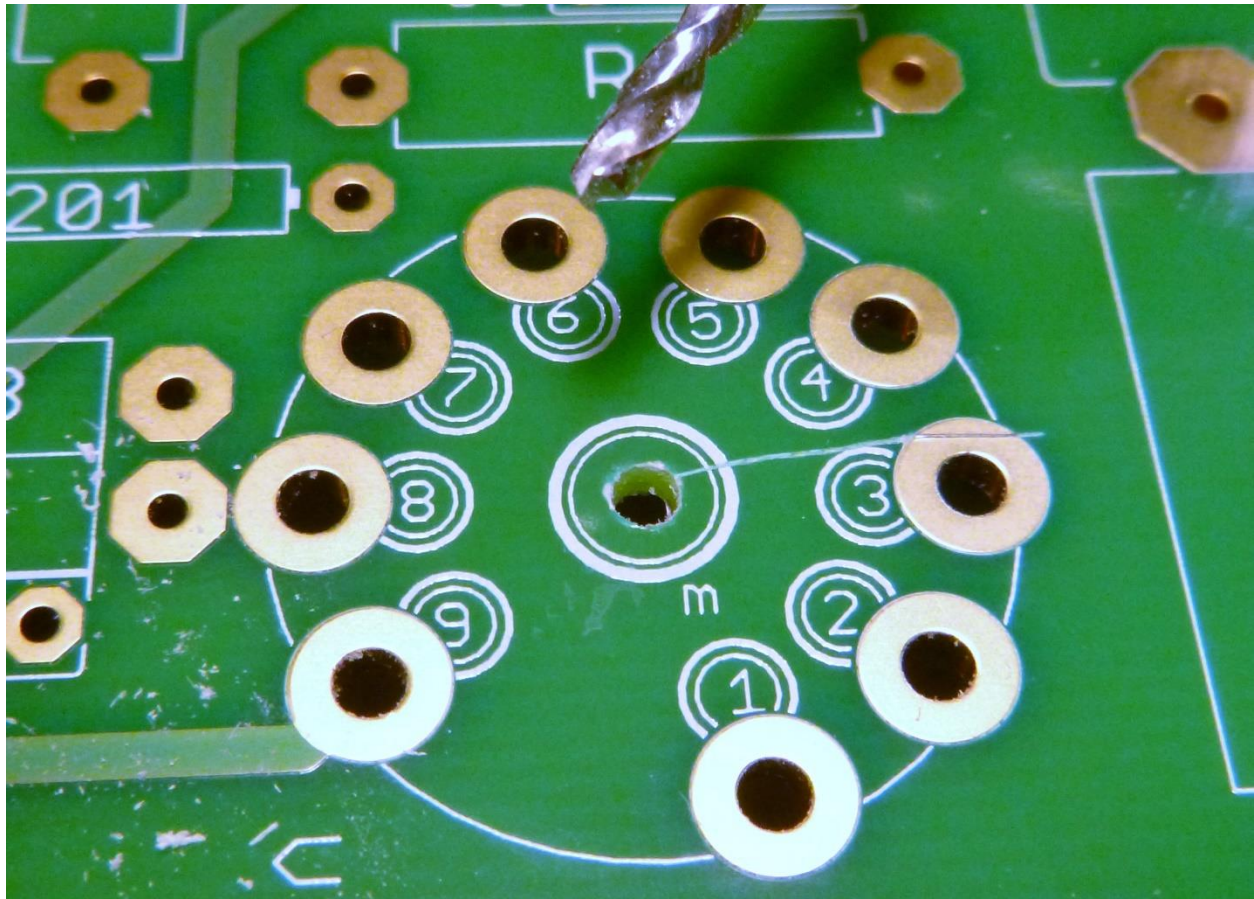


Chuck the centre bit in the drill. Set the drill speed to the slow setting. Drill the **seven** places at the locating mark to no larger than 1.7mm or .060" in diameter.

I bought some silicone baking mats in a discount housewares store for about \$3 each. They provide a grippy surface that assists when clamping and also help limit damage to parts.

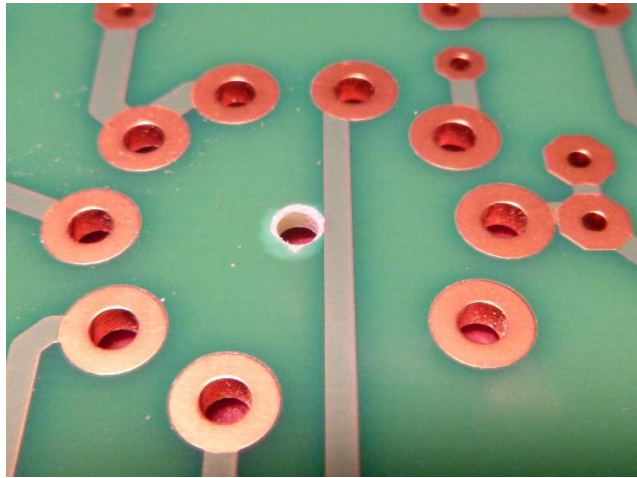
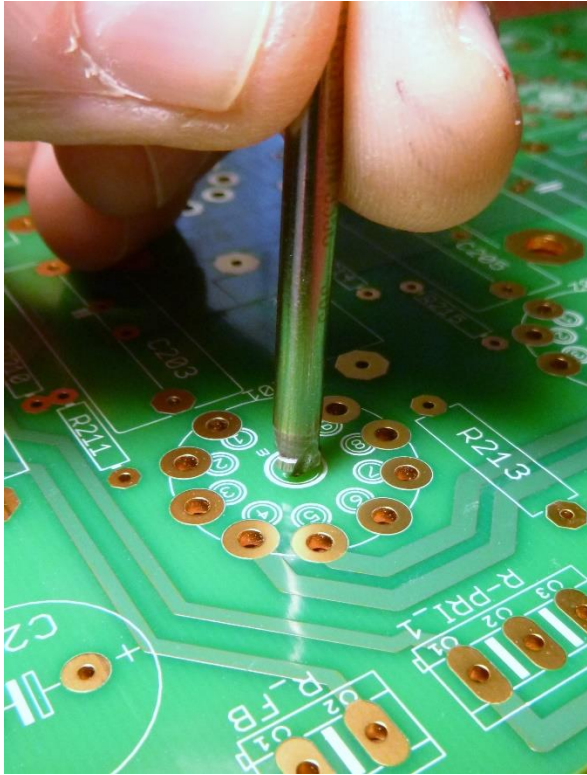


Clamp the board to the edge of a bench or table as shown.



Chuck the 1.7mm or 1/16" bit and drill through the board in the seven marked locations.

NOTE: Don't use a bit larger than 1.7mm or 1/16", or damage to board traces may result.



Use a small countersink to remove any burrs from drilling. Spinning it in your fingers should be adequate. Don't damage any PCB traces.

Proceed to Part 2, Attachment 2.